

When you purchase through links on our site, we may earn an affiliate commission. [Here's how it works.](#)

Design Ideas

Ideas

5 Kitchen Colors That You Won't Get Tired of, According to Designers — and None of Them are White

Your kitchen is an investment, and you'll want to love it now, and in a few years' time. Here are the 5 kitchen colors designers are confident you won't get tired of

    Sign up to our newsletter



(Image credit: AJ Cass Photography. Design: Cohesively Curated Interiors)



BY RALUCA RACASAN
PUBLISHED 2 DAYS AGO

Most of us design lovers aim to make something of a statement when it comes to our kitchens. A beautiful kitchen takes a lot of thought, detailed planning, and decision-making with a view to design a space that you'll love now, and for a good many more years to come. In terms of style, while faced with several options, it's nothing compared to the myriad number of colors you'll have to go through, test and review, before being confident in your final decision.

Let's face it. The color of your kitchen is not something you can afford to get bored of anytime soon. So, what should you go for? I spoke to interior designers who create beautiful, timeless yet [modern kitchens](#), and they assured me that no matter your taste, there will be a color out there that you'll stay in love with. And one of them is actually your favourite! From warm neutrals to bold hues, here are the experts' top picks.

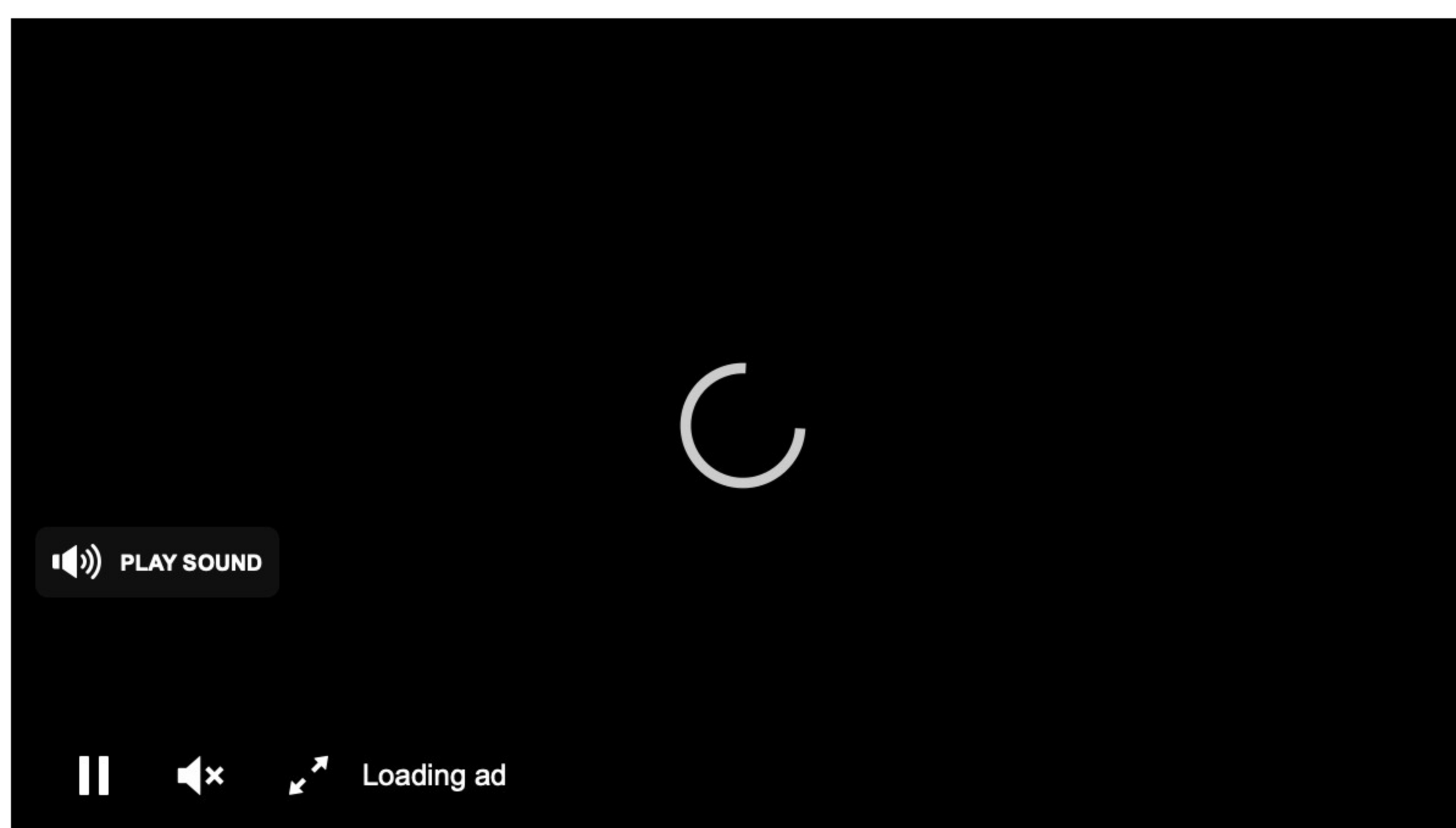
1. NATURAL GREEN



(Image credit: Morrison House Design)

One of the most versatile colors out there, and considered a 'new neutral' for many, natural greens have been on designers' radar for a while and will continue to go strong in 2024. As a color we associate primarily with nature, green has an incredible way of reconnecting us with our surroundings, creating moments of calm and positivity. Thanks to the variety of its different shades, from pale sage to dark forest green, it suits all styles and sizes of kitchens. '[Green](#) is a timeless choice as it is known for creating a cozy and rejuvenated atmosphere,' says interior designer [Lindsie Davis](#).

When deciding what tone to pick for your [green kitchen](#), go as natural as possible. Olive green is a stunning color with earthiness and depth that leaves you feeling nourished and full of life, perfect for your culinary hub.



make it
\$2.50
per serving

Affordable Family Meals

Learn about Consistent Low Prices—helping your family eat delicious, affordable meals.

Beautiful.
Classic.
Washable.

© Morris & Co.

Ruggable X MORRIS & CO. SHOP NOW

Interior designer [Kristen Harrison](#) tells me that [Farrow & Ball's Treron](#) is a stunning grey / green that pairs very well with neutrals, and so is [Benjamin Moore's Raindance](#). 'I love when people come to your house and can't tell what exact color they are looking at. Is it green? Is it blue? Is it grey? This color will adapt depending on the light... a sure way to never go out of style,' she says. 'Opt for a darker green, like [Sherwin Williams Pewter Green](#) for a bolder vibe, while [Benjamin Moore's Norway Spruce](#) is a go to for a soothing splash of color,' advises Lindsie, while interior designer [Christine Vroom](#) swears by [Farrow & Ball's classic Ball Green](#).

2. CALMING BLUE



(Image credit: Studio Munroe. Photo credit: Thomas Kuoh)

Another one to remind us of nature, the calming attributes of blue are unparalleled in a home, and a [blue kitchen](#) will look elegant and timeless. 'Blue is a classic and one the easiest colors to use as it pairs well with a variety of cabinet styles and colors combinations,' explains Lindsie. '[Sherwin Williams Sea Serpent](#) is a great choice when you are looking to add more of a true-blue punch while keeping an overall darker tone. If you're leaning more towards an English Cottage style kitchen, try [Woodlawn Blue by Benjamin Moore](#),' Lindsie adds.

If you love a cooler, stonier look that will always look good, Kristen recommends [Sherwin Williams' Grays Harbor](#), 'a great slate blue that can give you a lot of drama in your kitchen. Dark cabinets are classic, don't be fooled you into thinking otherwise,' she says.

3. DEEP BLACK

SAMSUNG

Get the new Galaxy S24
128GB on us with trade-in

Plus double the storage

Galaxy AI is here

PRE-ORDER NOW

xfinity mobile

Ends 1/30. With qualifying trade-in. Req. Xfinity Internet, new line or upgrade, and device plan.

Livingetc

CLOSE ✕

Loading ad

PLAY SOUND

⏸

🔊

🔍



**TAKE ONE
GIANT LEAP
AGAINST
CANCER:**

**ELIMINATE MENTHOL
CIGARETTES**

CAMPAIGN
FOR
TOBACCO-FREE
Kids

PAID FOR BY CAMPAIGN
FOR TOBACCO-FREE KIDS



(Image credit: Raiili Ca)

For those who dare, there isn't a chicer option than a [black kitchen](#). Some might say not the most practical, but if maintained properly, and paired with a beautiful stone [kitchen countertop](#), will it look stunning for years to come? It absolutely will. 'You can never go wrong with a classic black kitchen. It stands the test of time and tends to never fail,' Christine tells me, and adds that her go-to is [Caviar from Sherwin Williams](#). While it's a very sophisticated choice, make sure you balance it out to. 'Black is never out of style, just pair it with warmer accessories so it doesn't feel like a super villain's lair,' advises architect [Katherine White](#) of Teass Warren.

When choosing your tone, if a pure black sounds a bit much, then think more along the lines of [kitchens with dark cabinets](#) in a deep charcoal, to achieve a similar effect. 'Deep, almost black charcoal tones will always be a favorite pairing for a modern, sophisticated look,' explains Lindsie. '[Iron Ore by Sherwin Williams](#) is a go to when creating contrast with lighter cabinetry as well as wood,' she adds.

4. WARM NEUTRAL





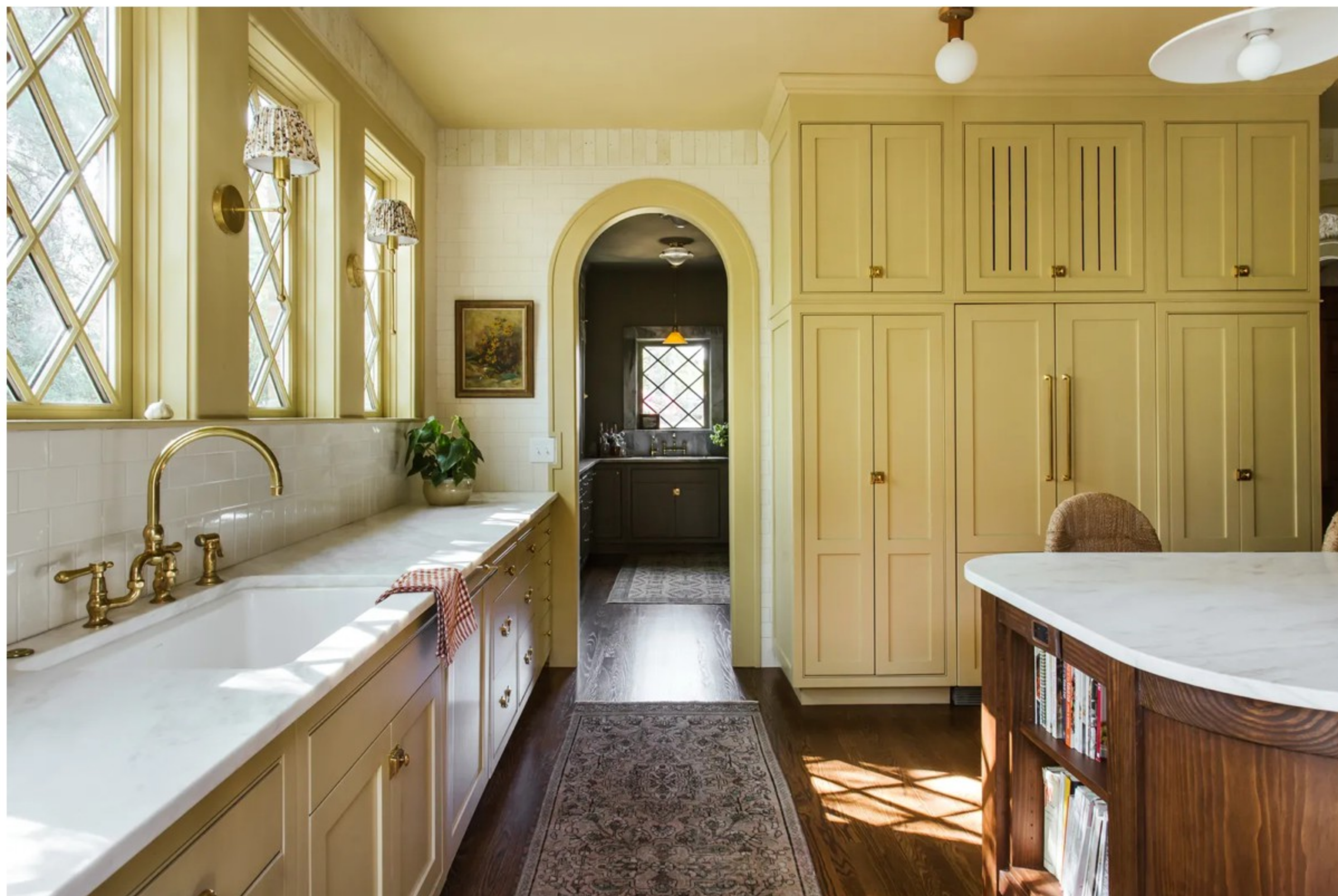
(Image credit: Stale Eriksen)

Think warm off-whites, creams, and light taupe tones. '[Neutrals](#) bring warmth to a space, but still keep things light and bright,' says Christine, and Katherine adds that 'light and airy whites and creams seem to never go out of style'. [Benjamin Moore's Natural Cream](#) is Kristen's choice. 'A bit warmer than a classic white and goes beautifully with a variety of finishes and textures,' she says and adds that [Farrow & Ball's All White](#) is, in her opinion, the perfect, absolutely timeless white.

'I don't think a [white kitchen](#) is going anywhere anytime soon,' Lindsie tells me. 'White is a classic that exudes elegance. While there are so many great choices, I often find myself reaching for [White Dove by Benjamin Moore](#), as well as [Alabaster by Sherwin Williams](#),' she says.

And if you want to take it one step further and add a bit more pigment to your neutrals, Lindsie recommends going for light taupe tones. 'From [Benjamin Moore's Balboa Mist](#) to [Sherwin Williams Gossamer Veil](#), taupe tones will always be a go to for adding contrast without reaching for white. Taupe tones not only pair well with blacks, blues, greens, [reds](#), but they are great to use with one another. Try opting for a light taupe paired with a darker taupe for refined pairing with your statement countertop stone,' suggests the expert.

5. YOUR FAVORITE COLOR



(Image credit: The Misfit House)

This was a pleasant surprise! Very easy to get right with minimal effort. Sign me up! When in doubt about what color to paint your kitchen, simply think about your favorite. 'Color trends come and go, but most of us have colors we've always gravitated toward,' advises Katherine. 'If you love [yellow kitchens](#) or royal blue, for instance, it doesn't matter that greige is all the rage. You're more likely to enjoy it longer if you choose something that is personal,' she says.

And if you think your favorite color is a bit too bold, or might be a bit much in a kitchen, the designer advises combining it with white, or neutral wood tones. Bear in mind you can choose to use your favorite color sparingly, as an accent, only on your island or bottom cabinets, and paint the rest in a neutral tone to get the best of both worlds.



Pewter Green Paint
[View at Sherwin Williams](#)



Natural Cream Paint
[View at Benjamin Moore](#)



Grays Harbor Paint
[View at Sherwin Williams](#)



Price: from \$59.84 per gallon of Emerald Interior Acrylic Latex Paint

A deep, natural green, will look best on your kitchen cabinets with brass hardware.

Price: \$79.99/ gallon of ADVANCE Interior Paint

This sophisticated light cream will never go out of style, and it's a go-to for interior designers.

Price: from \$59.84 per gallon of Emerald Interior Acrylic Latex Paint

A tranquil, cool blue, that will look elegant in both a traditional or a modern setting.

Be The First To Know

The Livingetc newsletter is your shortcut to the now and the next in home design. Subscribe today to receive a stunning free 200-page book of the best homes from around the world.

Your Email Address

- Contact me with news and offers from other Future brands
- Receive email from us on behalf of our trusted partners or sponsors

By submitting your information you agree to the [Terms & Conditions](#) and [Privacy Policy](#) and are aged 16 or over.



Raluca Racasan

News writer

Raluca is Digital News Writer for Livingetc.com and passionate about all things interior and living beautifully. Coming from a background writing and styling shoots for fashion magazines such as Marie Claire Raluca's love for design started at a very young age when her family's favourite weekend activity was moving the furniture around the house 'for fun'. Always happiest in creative environments in her spare time she loves designing mindful spaces and doing colour consultations. She finds the best inspiration in art, nature, and the way we live, and thinks that a home should serve our mental and emotional wellbeing as well as our lifestyle.

LATEST

SPONSORED



Subscribe to Livingetc and save 42%



This Simple Trick Makes Old Wooden Furniture Look so Much More Stylish – 'It's Transformed my Entire Home!' Give your furniture a new lease of life with



This Vertical Propagation Idea is a Genius Way to Create a Living Wall for all Your Favorite Plants Use this trick to turn your plant propagation into a wall feature and instantly elevate your